



**Deep Stratigraphic Drilling in
the Mediterranean**

A. Camerlenghi, E. Erba

Granado et al., 2016



A **Complementary Project Proposal (CPP)** is a proposal with a commitment from a third-party source for a substantial amount of financial support.

CPP proponents should contact the Chair of the appropriate Facility Board to enquire about the amount of outside funding required.

For example, in the case of the JOIDES Resolution, an unrestricted donation of at least US\$ 6 million to the U.S. National Science Foundation is required to implement a CPP.

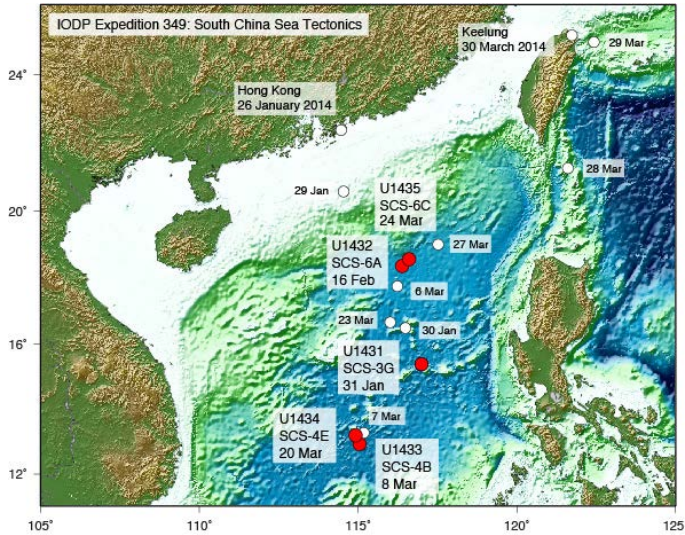
Because of the specialized nature of these CPP programs, it is highly advisable to discuss potential plans for developing a CPP with the SSO and the IODP Science Operator before a CPP proposal is written and submitted.

CPPs can receive fast-track consideration by the SEP if so required by the funding entity, operational plans, etc.

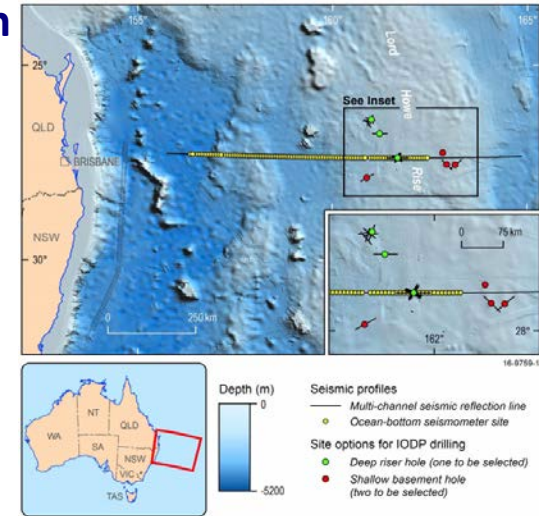


Complementary Project Proposal (CPP)

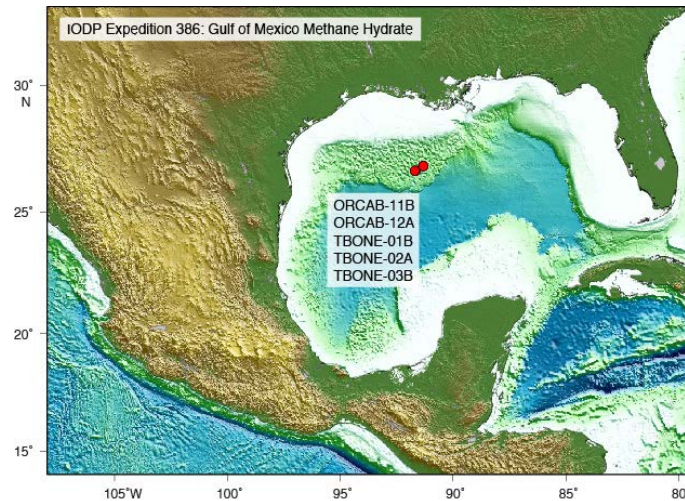
Expedition 349 - South China Sea

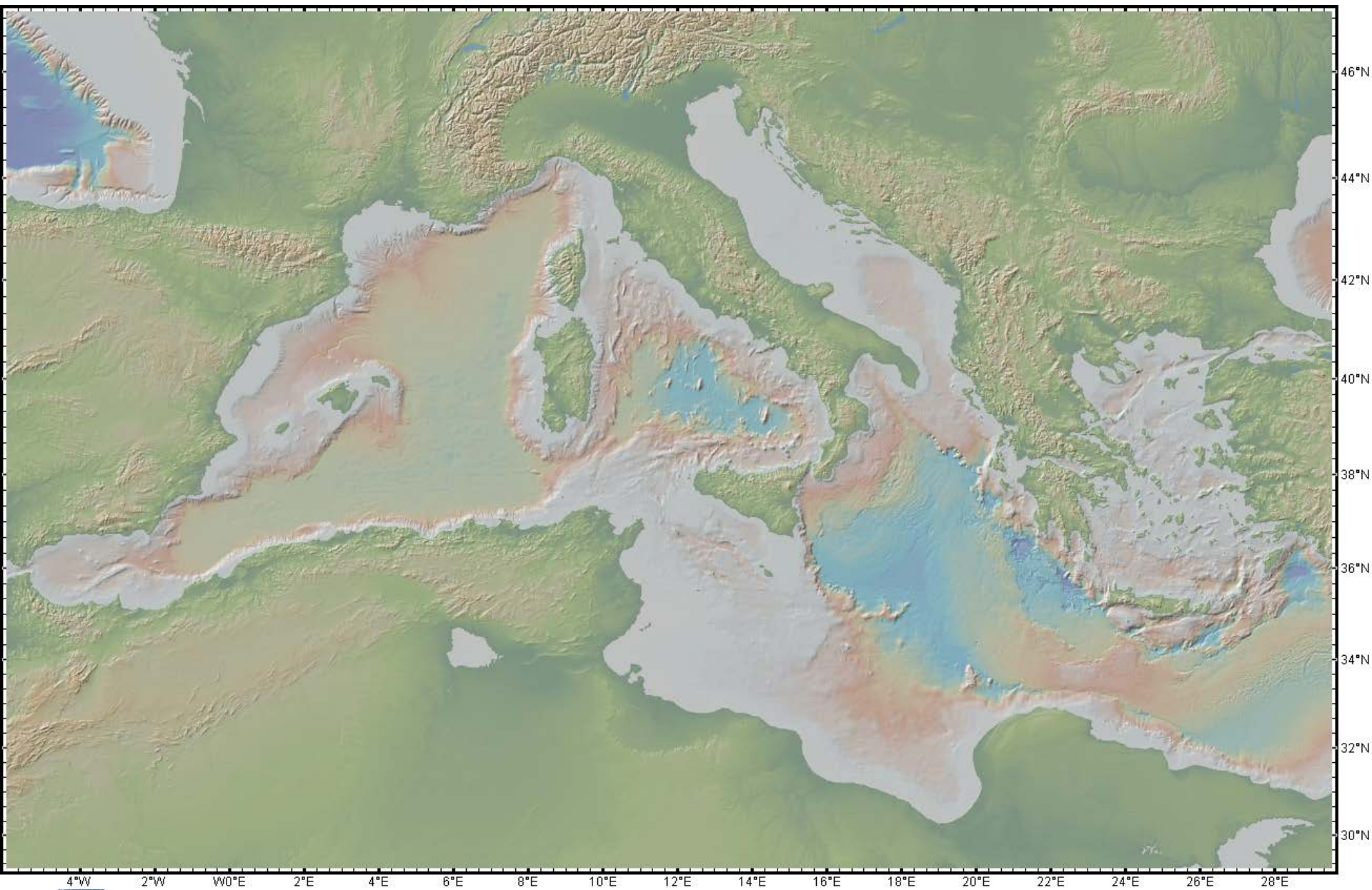


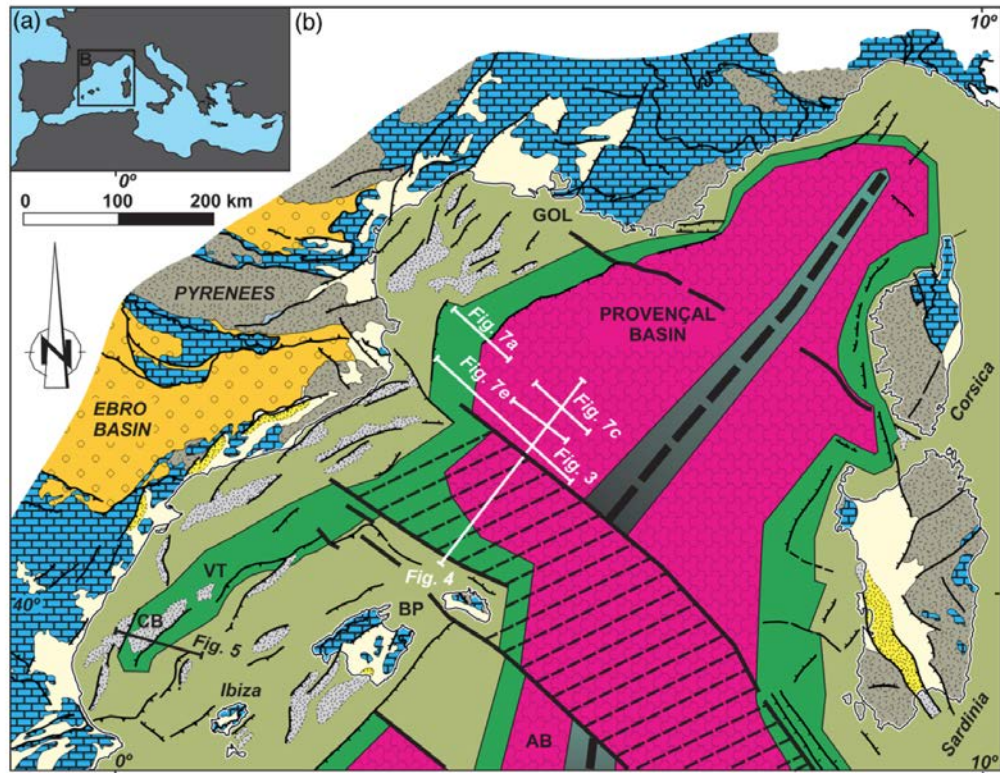
Southwest Pacific: tectonics, climate and ancient life on the Lord Howe Rise continental ribbon (2019?)



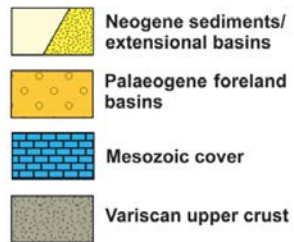
Gulf of Mexico Methane Hydrate (2020)



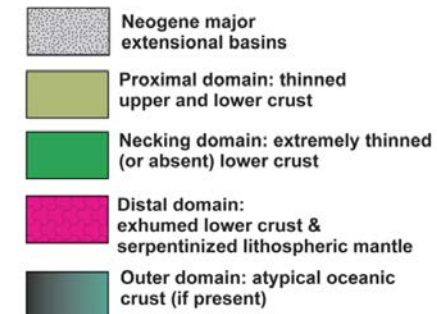




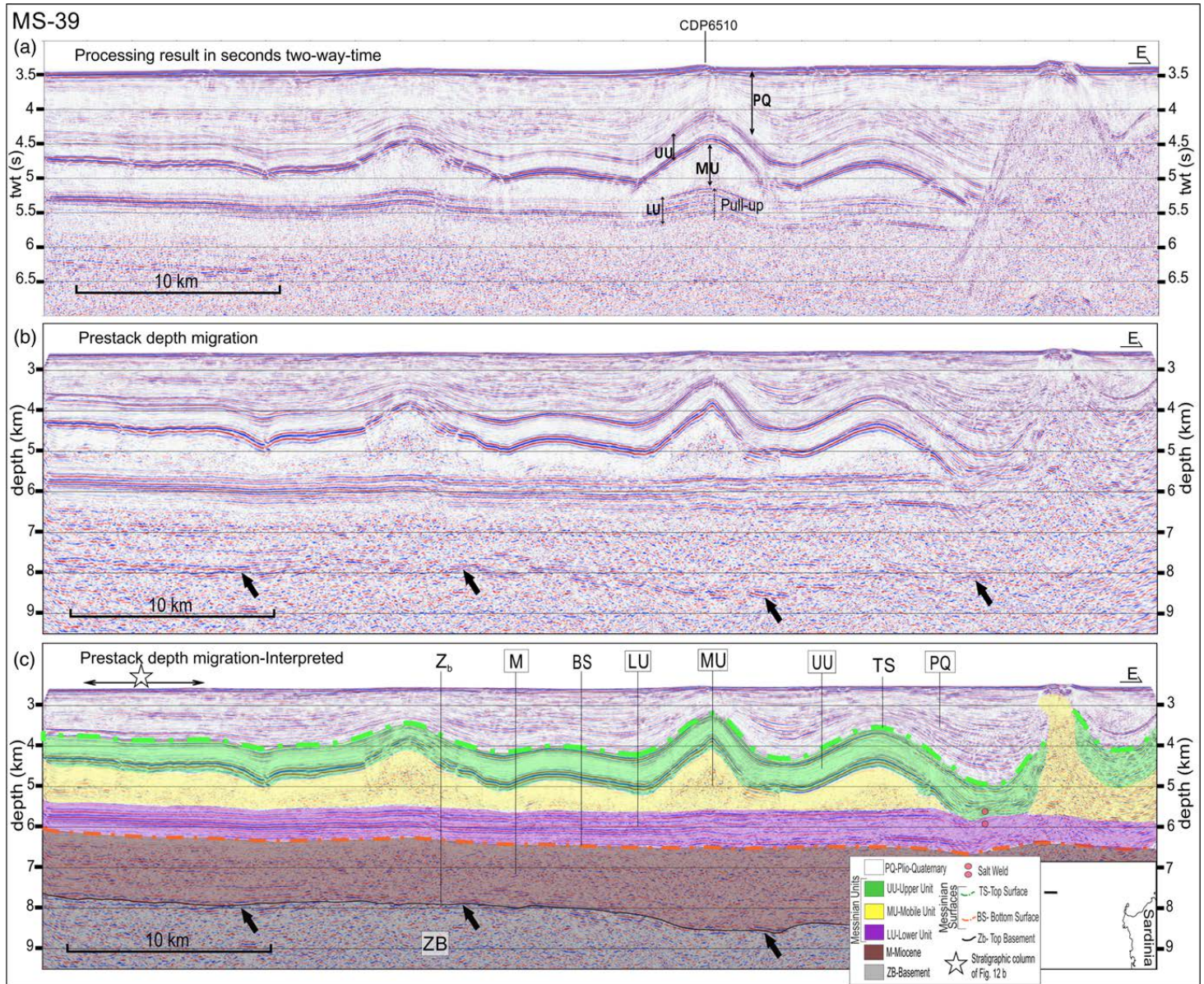
Onshore



Offshore (covered by Neogene sediments)



ATTENZIONE: ESPERIENZA PROGETTO GOLD INSEGNA



DalCin et al., 2016

Age of Oceanic Lithosphere (m.y.)

Data source:

Muller, R.D., M. Sdrolias, C. Gaina, and W.R. Roest 2008. Age, spreading rates and spreading symmetry of the world's ocean crust, *Geochem. Geophys. Geosyst.*, 9, Q04006, doi:10.1029/2007GC001743.

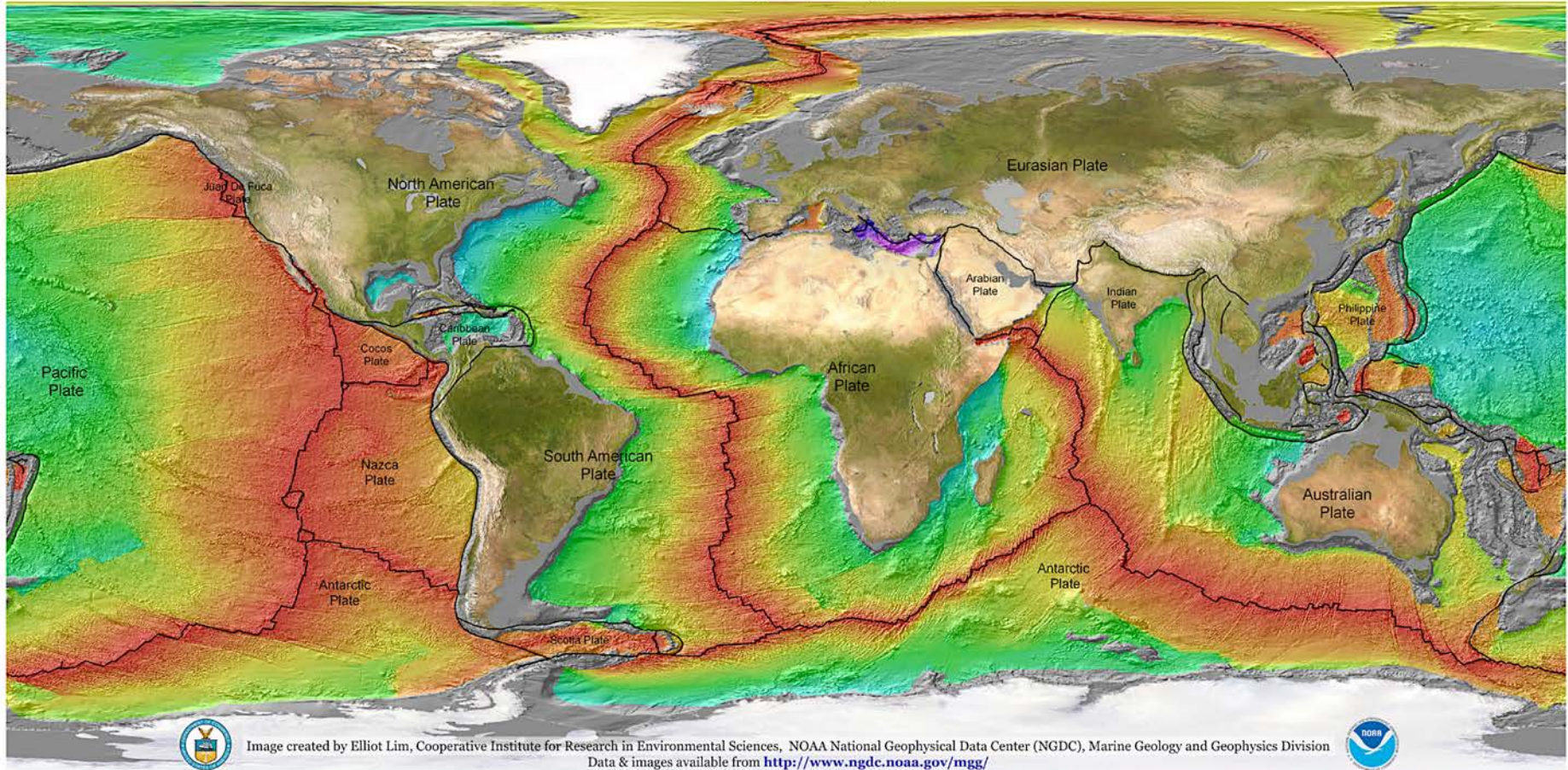
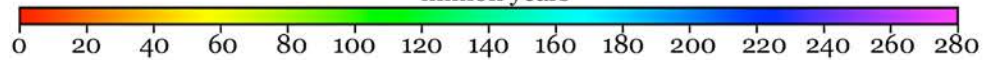


Image created by Elliot Lim, Cooperative Institute for Research in Environmental Sciences, NOAA National Geophysical Data Center (NGDC), Marine Geology and Geophysics Division
Data & images available from <http://www.ngdc.noaa.gov/mgg/>

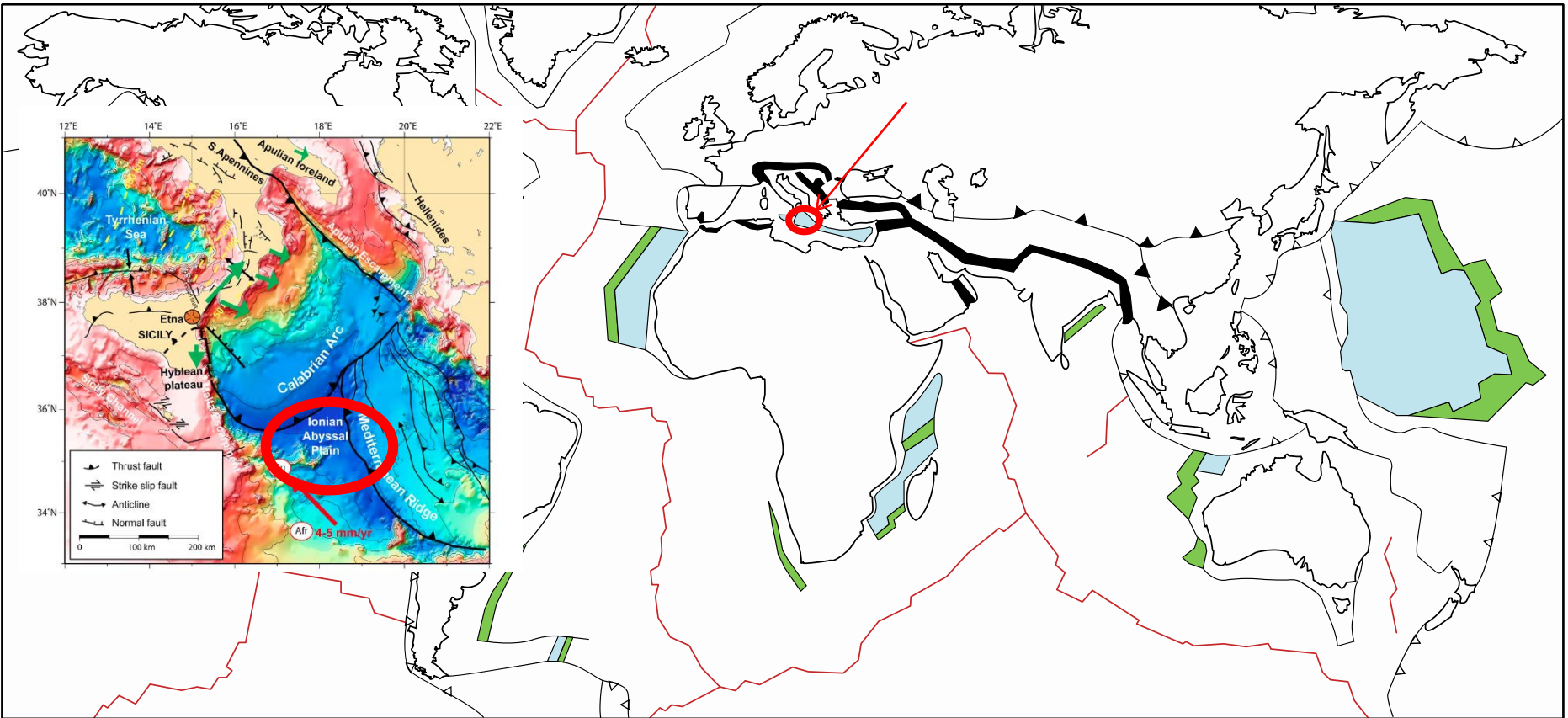


million years



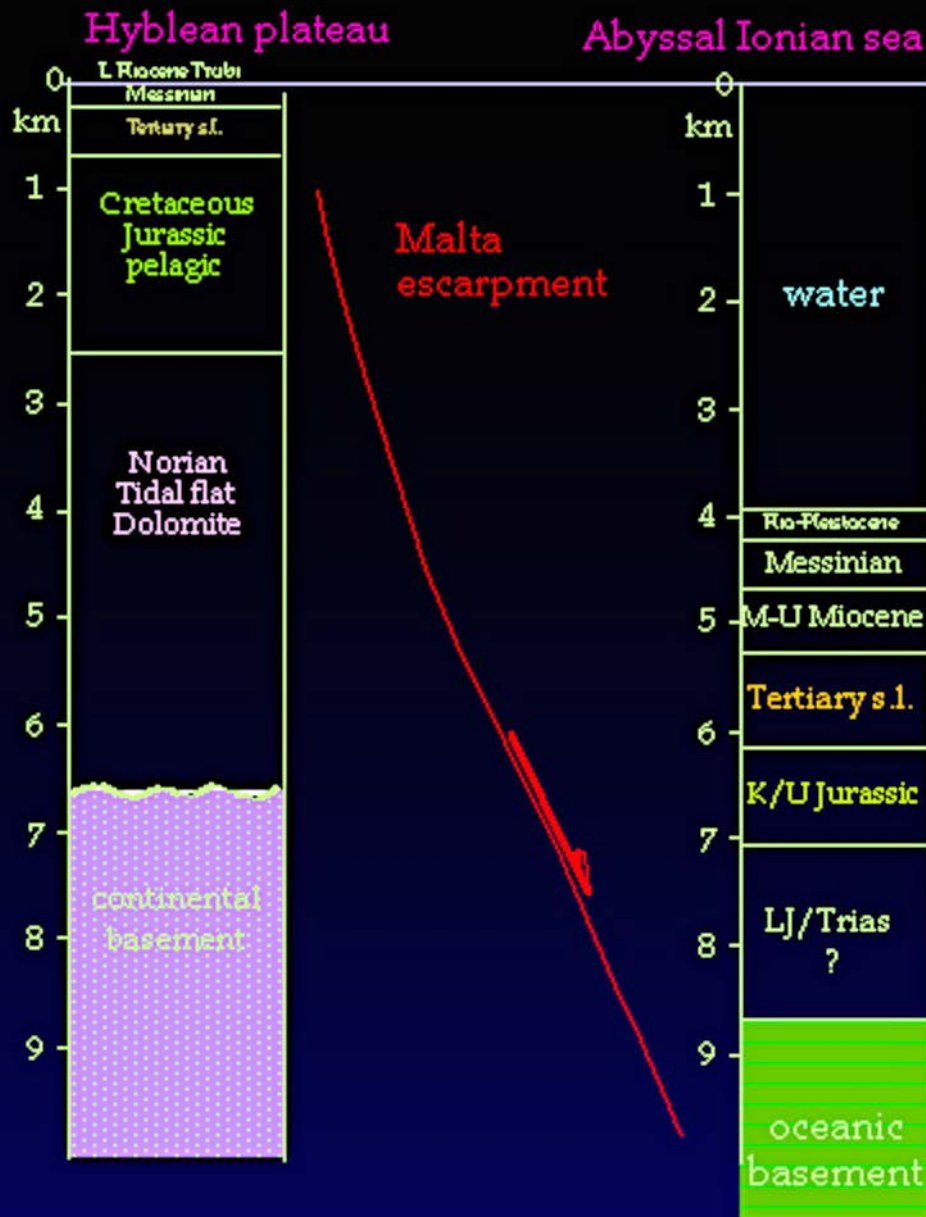
The Ionian Sea: The oldest in situ ocean fragment of the world?

Fabio Speranza,¹ Liliana Minelli,¹ Alessandro Pignatelli,¹ and Massimo Chiappini¹



- Early Cretaceous ocean floor (>120 Ma)
- Jurassic ocean floor
- Mesozoic ophiolites (sutures of the Mesozoic Tethys)

- Palaeotethyan sutures (Permo-Triassic)
- Subduction zones

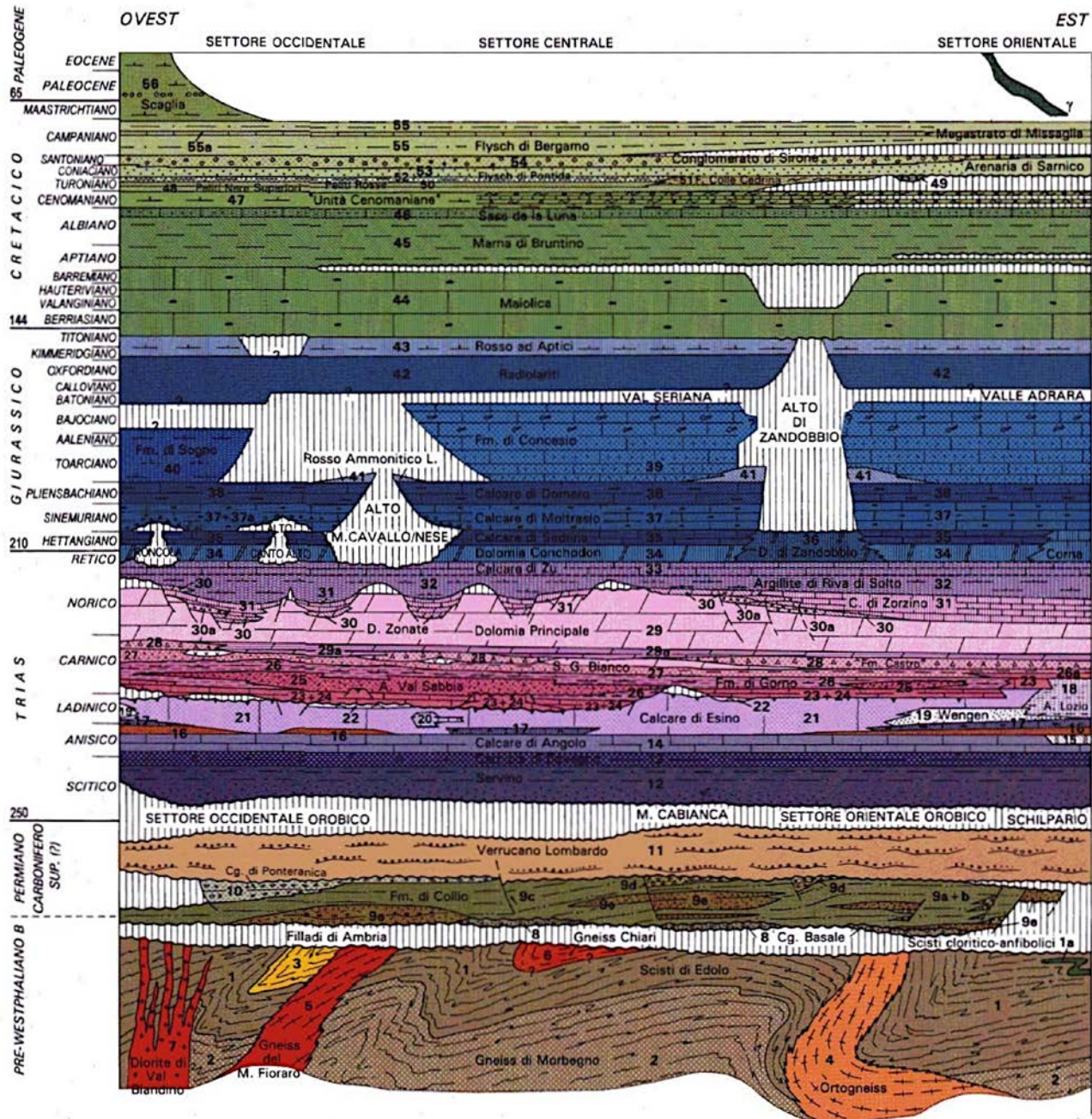


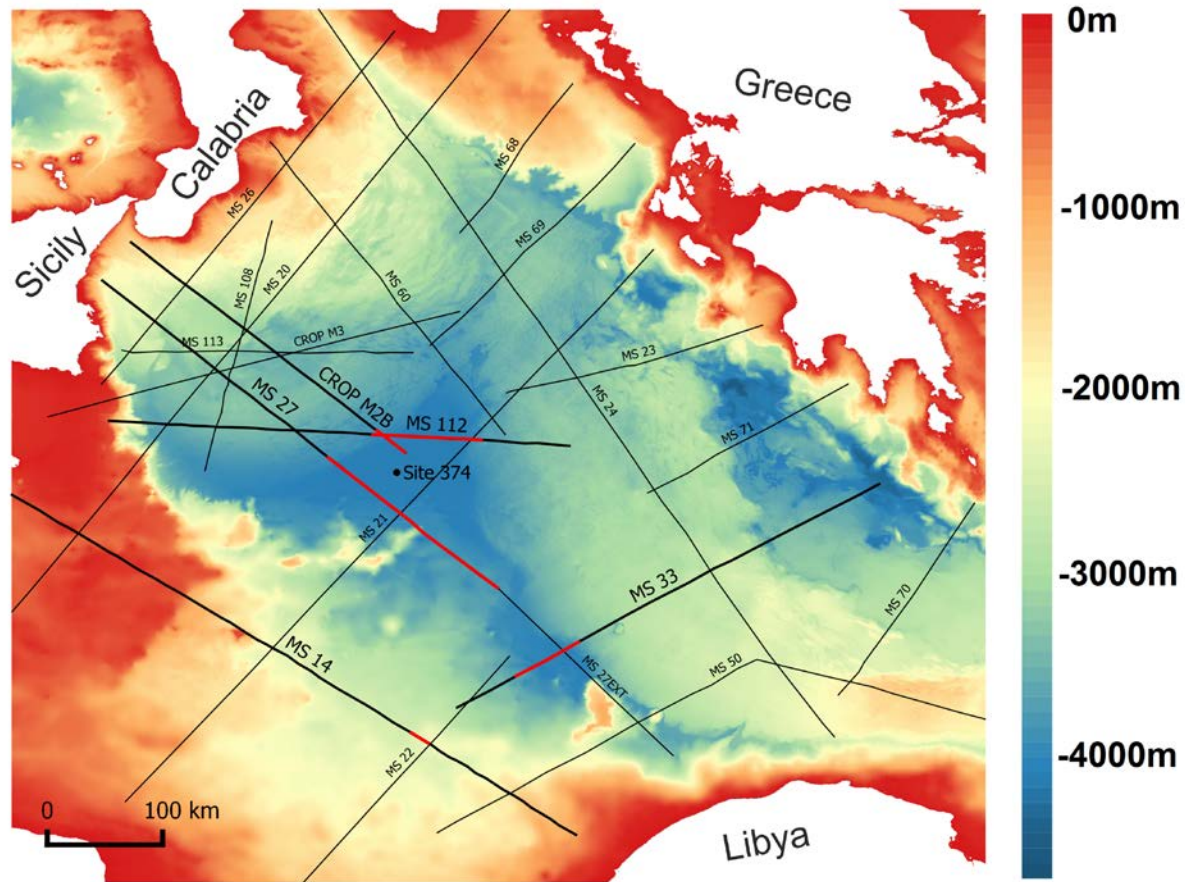
C. Doglioni F. Innocenti G. Mariotti

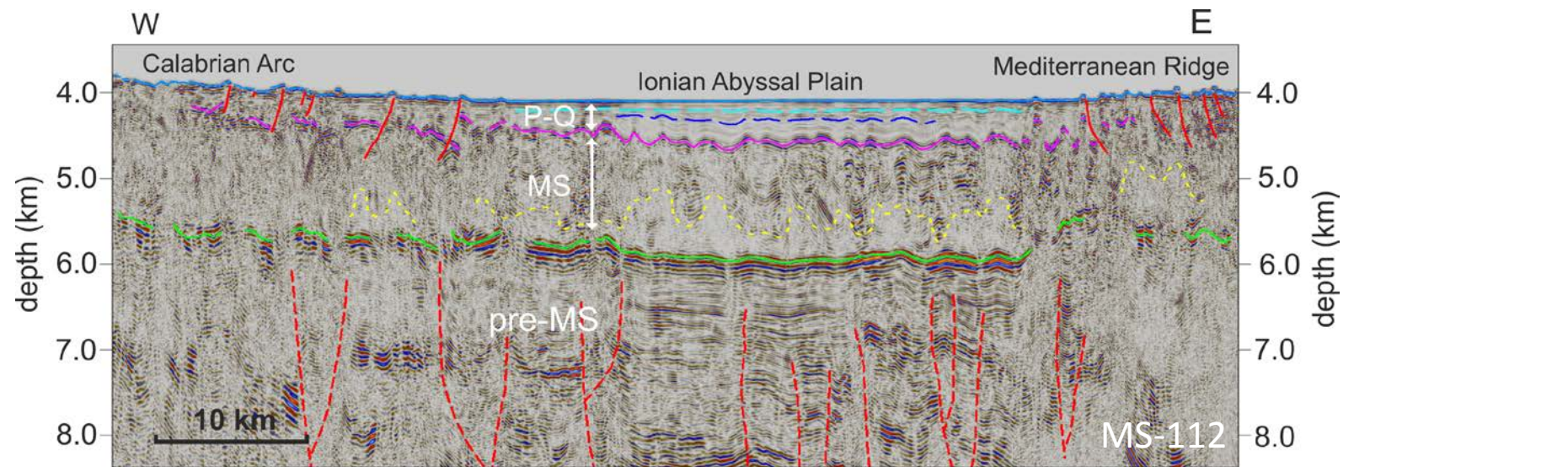
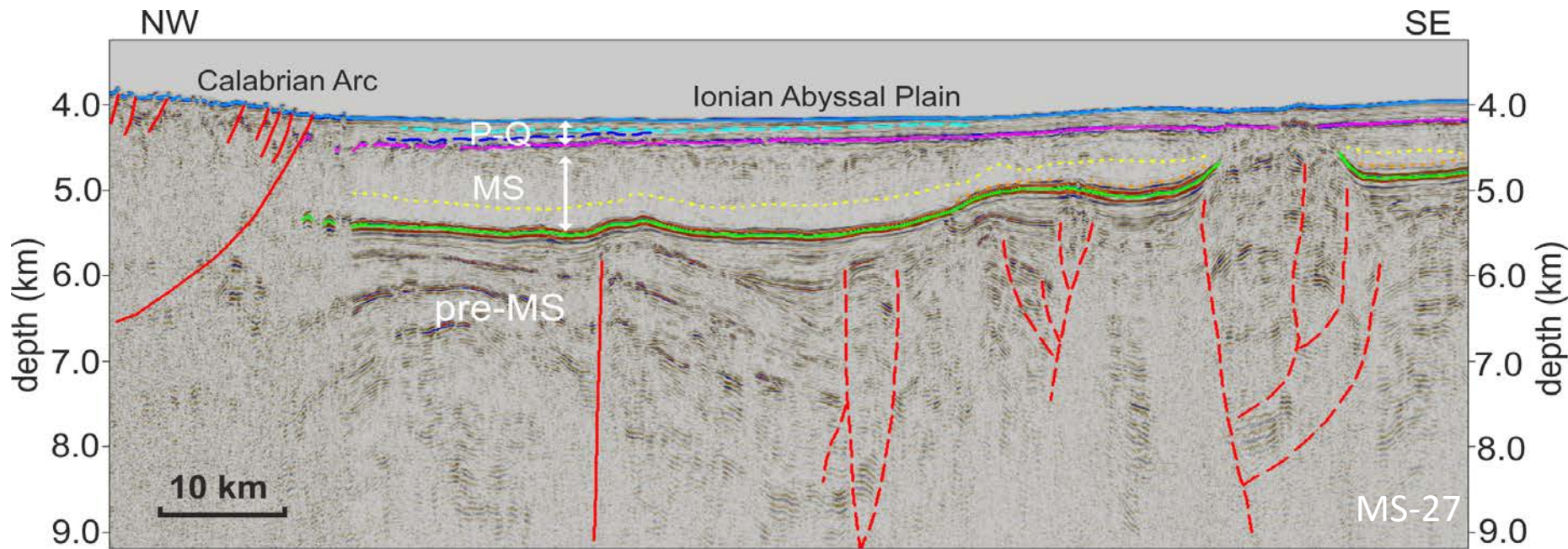
The Ionian Abyssal Plain of the Eastern Mediterranean might be **the oldest in situ ocean fragment of the world, with ocean crust of Late Triassic age.**

The current water depth of the Ionian Abyssal Plain is ~4000 m, and the sedimentary section is estimated to be ~ 7000-8000 m thick.

Need of IODP drilling







Deep stratigraphic drilling

- Targets: OK
- Chikyu vs JOIDES Resolution
- Technical feasibility (water depth, target depth, temperature)
- Salt in between
- Co-funding (government, companies)
- GOLD experience